

Melanie Anne Crawley

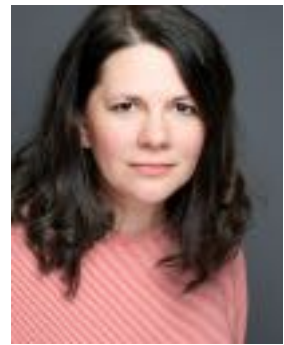
Spotlight: www.spotlight.com/6213-5649-8764

Website: melaniecrawley.com

Email: mel.anne.crawley@gmail.com

Phone: 07976350741

Represented by: [ADP Agency](#)



Theatre

Romeo and Juliet	Lord Montague	Hope Mill Theatre
Happy Minds Hospital Tour	Jane	Stevie Helps Theatre Productions
Three Post Apocalyptic	Lead, writer, producer	Stuffed Horse, commissioned by Rebuild Festival
Comedians Walk Into A Bar...		
Changes	Betty	The Lowry, Sue Jenkins
In a Forest, Dark and Deep	Betty, producer, designer	Salford Arts Theatre, David Chafer
<i>'A fine performance' (review by David Cunningham, Manchester Theatre Awards http://www.manchestertheatreawards.com/reviews/1011-in-a-forest-dark-and-deep-greater-manchester-fri-salford-arts-theatre)</i>		
Wine Face	Trish / Julie	Sheffield Theatres
Glengarry Glen Ross	Shelley Levene	Lantern Theatre
Confusions	Rosemary/Bernice/Mrs Pearce/Doreen	Lantern Theatre
Macbeth	Porter / Siward)	Lantern Theatre
<i>'Outstanding, too, were performances from...the infinitely watchable Melanie Crawley who stole the stage as a mere Porter/Steward' (review by Polly Perkins http://www.toastmagazine.net/reviews/live/macbeth-lantern-theatre-friday-24th-oct/)</i>		
The Sheffield Mysteries	Debbie the builder	Crucible Theatre, Daniel Evans
A Slight Ache	Flora	Lantern Theatre

Television

Coronation Street	Court Clerk (speaking role)	ITV
--------------------------	-----------------------------	-----

Commercial

Tesco Food Love Stories	Joan	Bartle Bogle Hegarty
--------------------------------	------	----------------------

Film

The Middle of Nowhere	Margaret	Ian Campbell Productions
This One Family	Pamela	N.Y.T Productions
L'histoire des larmes de la princess	The Queen	lowercase productions

Radio

Dylan and Blod	Blodwyn	Cornucopia Radio
Where Shall We Go?	She	Duncan Parsons
Unrespected (series 2)	Miss Peel / Wendy	Sheffield Live Radio
Breakdown Recovery	E J Spicer	Write for the Stage (Radio play)

Audio

The Lake People Series, C L Bevill	Narrator	ACX
Missing Gretyl, Si Page	Narrator	ACX

Relevant training, education and other experience

Melanie is the founder of 'Stuffed Horse' Theatre.

Previous: Scene Study. Play with Fire Productions, Manchester 2017, Actors Lab Professional Acting Class, 2016; Workshop: TV Comedy, Rick Laxton, 2016 / Workshop: Comedy in Shakespeare, Phil Sheppard, Crucible Theatre, 2015 / Radio Drama, Polly Thomas, 2016; Creative Arts BA Hons (2:1), Drama and Visual Arts, Manchester Metropolitan University **Accents and dialects:** Accent: Neutral, native English speaker /

Additional: RP, Northern English, Cockney, West Midlands, Scouse, Manchester, Scottish, General Irish, Western Irish, Welsh, General US, Southern US.